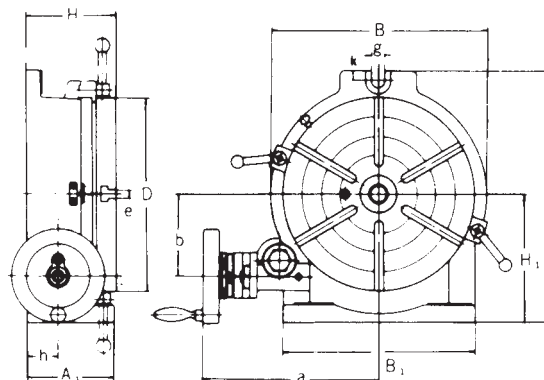


HV-6, 8, 10, 12, 14, 16



HV-4

Special Accessories (Details on page 2)



Specifications

Unit:mm/inches

ORDER NO.	Table		Height	Base dimension			Width of T-slot		Bolt slots	The Load Capacity For Rotary Table		Center sleeve	Gross Weight kg wooden case(W) Carton(C)	Meas. CFT	CODE NO.
	Outer diameter			H1	A	B	e	Type		Horizontal	Vertical				
HV-4	70	110	80	85	145	115	11	⊗	12	35 KGS	18 KGS	MT-2	(C) 7.6kgs	0.3	1001-000
HV-6	78 3.07	150 5.91	80 3.11	100 3.94	200 7.87	160 6.30	11 0.43	⊗	15 0.59	40 KGS	20 KGS	MT-2	(C) 12.7kgs	0.4	1001-001
HV-8	100 3.94	200 7.87	105 4.13	135 5.31	265 10.43	220 8.66	14 0.55	⊗	17 0.67	80 KGS	40 KGS	MT-3	(C) 26.9kgs	0.8	1001-002
HV-10	110 4.33	250 9.84	115 4.53	165 6.50	325 12.80	280 11.02	14 0.55	⊗	17 0.67	90 KGS	50 KGS	MT-3	(C) 37.7kgs	2	1001-003
HV-12	130 5.12	300 11.81	135 5.32	195 7.68	388 15.27	330 12.99	16 0.63	⊗	18 0.71	120 KGS	60 KGS	MT-4	(C) 60.6kgs	2.6	1001-004
HV-14	130 5.12	350 13.78	140 5.51	230 9.06	450 17.72	380 14.95	16 0.63	⊗	18 0.71	130 KGS	70 KGS	MT-4	(C) 79.5kgs	3.2	1001-005
HV-16	150 5.90	406 15.98	155 6.10	255 10.03	500 16.69	430 16.93	16 0.63	⊗	18 0.71	140 KGS	70 KGS	MT-4	(W) 118.4kgs	4.2	1001-006

- Our Tables are made of high density Meehanite and use "HEIDENHAIN" electronic equipment to inspect angle to assure the excellent quality and durability.
- Use excellent machining center to process. Spindle end be applied accuracy bearing. Can be assured to keep very steady under load cutting.
- Worm is hardened and ground. The ratio is 90:1. The work table is graduated a full 360° so that one turn of the handle moves the table through 4°. Micro collar is graduated in steps of 1' min. And vernier scale makes settings down to 10 seconds possible.
- These Rotary Tables are popular for their excellent performance, practical design and reasonable cost. They are widely used for circular cutting work, angle setting, boring, spot-facing and similar work.

Test Report

ITEM NO.	TESTING OBJECTIVE	VARIATION (INCHES)(MM) MAXIMUM TESTED	
1	FLATNESS OF CLAMPING SURFACE (CONCAVE)	.0006(0.015)	
2	PARALLELISM OF CLAMPING SURFACE TO BASE	.0008(0.02)	
3	SQUARENESS OF CLAMPING SURFACE TO ANGLE FACE	.0008(0.02)	
4	TRUE RUNNING OF CLAMPING SURFACE	.0006(0.015)	
5	TRUE RUNNING OF CENTER HOLE MEASURED AT HOLE EDGE	.0008(0.02)	
6	INDEXING ACCURACY OF DIRECT INDEXING MECHANISM MAXIMUM CUMULATIVE SPACING ERROR	45"	



A. DIVIDING PLATES



*DP set include index plate, crank handle, 3 pcs screw, sector, & U Washer.
1 carton with 1 set. Gross weight: 3.5kgs.
Meas.: 0.13 CFT.
Number of the holes of Dividing Plates

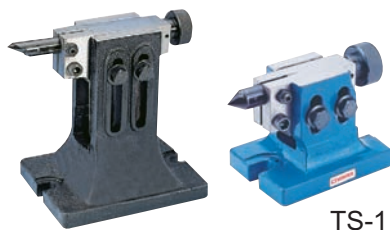
ORDER NO.	SUIT FOR MODEL	WEIGHT kg	CODE NO.
*DP-1	for HV-4, HV-6, VUT-6, VU-100, 150	1.4	1001-030

A-PLATE	15, 16, 17, 18, 19, 20
B-PLATE	21, 23, 27, 29, 31, 33
C-PLATE	37, 39, 41, 43, 47, 49

ORDER NO.	SUIT FOR MODEL	WEIGHT kg	CODE NO.
* DP-2	for HV -8, VU-200	4.5	1001-031
DP-3	for HV -10, 12, 14, 16, VUT-10, RT -12	4.6	1001-032
DP-4	for CS-6, 8	4.6	1001-033
DP-5	for VU-300	4.6	1001-034

A-PLATE	26, 30, 34, 38, 41, 44, 47, 51, 57, 28, 32, 37, 39, 43, 46, 49, 53, 59
B-PLATE	61, 67, 71, 77, 81, 87, 91, 97, 63, 69, 73, 79, 83, 89, 93, 99

B. TAILSTOCK



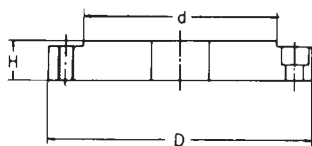
ORDER NO.	adjustable		SUIT FOR MODEL	G.W. kg	Meas. CFT	CODE NO.
	highest	lowest				
TS-1	110	80	HV-4, HV-6, VSI-4, VSI-5, BS-0, VUT-6, VU-100, VU-150	3.9	0.4	1001-022
TS-2	145	115	BS-1, CC-6 CS-6, HV-8	5.5	0.4	1001-023
TS-3	200	130	CS-8, HV-10, HV-12, CC-8, VUT-10, VUT-12, VU-200	8.1	0.4	1001-024
TS-4	260	190	HV-14 HV-16	11.9	0.7	1001-025

Unit:mm

C. FLANGE



FLT-0 For VSC-5F
FLT-1 For VSC-6F
FLT-2 For VSC-7F
FLT-3 For VSC-8F



ORDER NO.	D	d	H	SUIT FOR MODEL	WEIGHT	CODE NO.
FLT-0	138	100	20	RT-HV- 6, 8	1.9	1001-040
FLT-1	170	130	21	RT-HV- 8, 10	3.3	1001-041
FLT-2	195	155	24	RT-HV- 10, 12, 14	5.2	1001-042
FLT-3	210	160	24	RT-HV- 12, 14, 16	4.9	1001-043

Unit:mm



Precision 3-Jaw Scroll Chuck

- Detail specification & Order NO. shown on page E5



- Internal jaws and External Jaws may be used interchangeably.
- This type of chuck is suitable for the operation of mass-production. It is durable and economical.

Reversible type



For indexer, The fixing hole is from front.

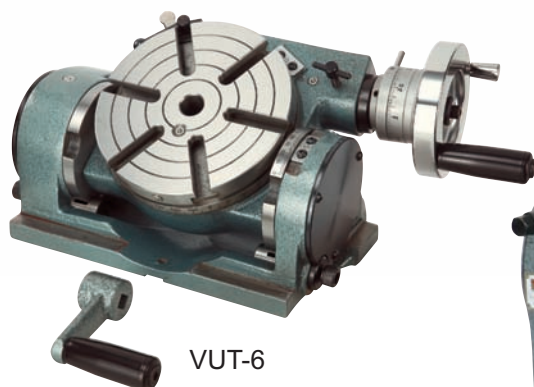
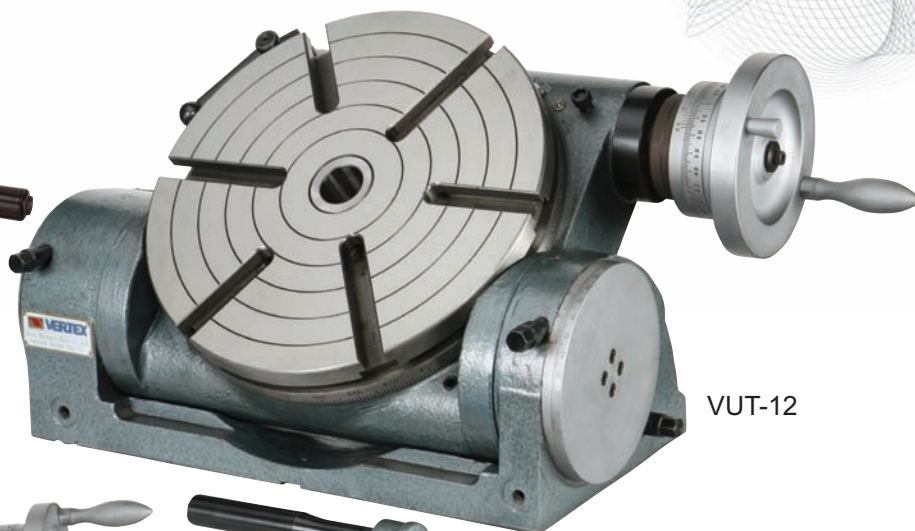
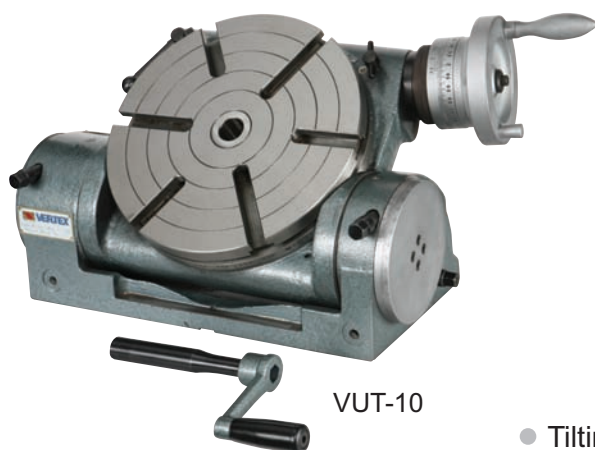
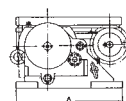
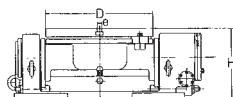
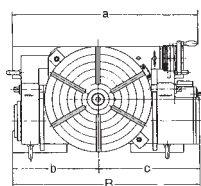
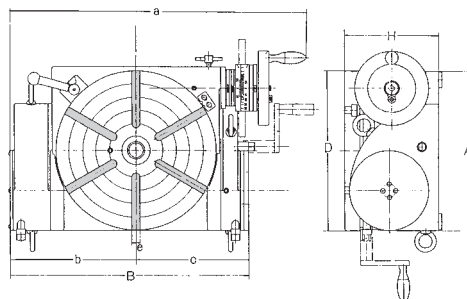
- This type of chuck have wide scope of applications. The hard jaws are suitable for heavy cutting. The soft jaws are suitable for light cutting. They could be used alternately.
- Hard jaws could be used as both internal jaws and external jaws.

ORDER NO.

VSC-5A SUIT FOR BS-0 OR HV-6, VUT-6, VU-150
VSC-6A SUIT FOR BS-1 OR HV-8, 10, VUT-6, VU-200
VSC-7A, 8A SUIT FOR BS-2 OR HV-10, 12, 14, VUT-10, 12
VSC-10A SUIT FOR HV-14, 16

ORDER NO.

VSK-6A SUIT FOR CS-6, CC-6
VSK-8A SUIT FOR CS-8, CC-8
VSK-12A SUIT FOR CC-12


NEW
Heavy Duty Type, Rigid & Strong Design

VUT-6

VUT-12

VUT-10


- Tilting by rigid & strong design, 2 supporter & rigid clamping system construction.
- Minimum set-up time.
- Tilting angle can adjusted by worm & worm gear system.
- Accurate and built for use in milling, boring and other machines.
- Indexing, facing and other operations can be done rapidly with extreme precision.
- Worm shafts are hardened and ground.
- Indexing can be done with optional dividing plates.
- DP-1 for VUT-6, DP-3 for VUT-10, VUT-12.
- Tailstock TS-1 for VUT-6, TS-3 for VUT-10, VUT-12.

MAIN SPECIFICATIONS		VUT-6	VUT-10, VUT-12
TILTING	Degree per one handle rotation	6°	1°
	vernier reading	1'	2'
TABLE	Degree per one handle rotation	4°	4°
	Scale of micro collar	1'	1'
	vernier reading	10"	10"
	Gear ratio	1:90	1:90

Specifications

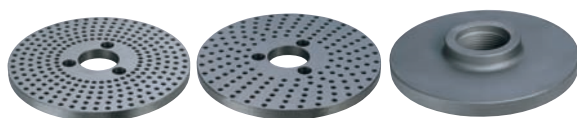
ORDER NO.	TABLE DIAMETER & TABLE HEIGHT			MOUNTING SURFACE		OVER ALL SIZE			T-SOLT WIDTH	CENTER HOLE	CENTER HEIGHT (Tilted at 90°)	WEIGHT (kg)	CODE NO.
	D	H	h	A	B	a	b	c					
VUT-6	150	115	165	180	268	380	143	125	10	MT-2	90	23.2	1001-014
VUT-10	250	155	275	255	397	495	210	187	12	MT-3	150	75.2	1001-015
VUT-12	300	178	319	300	447	551	235	212	14	MT-4	169	100	1001-016



THREAD SPINDLE:
BS-0. 1 1/8 - 12TPI
BS-0. 1 1/2 - 8TPI

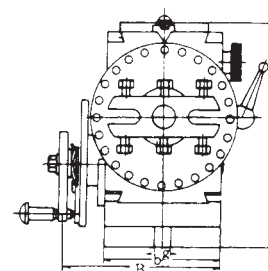
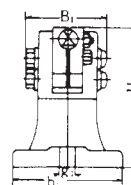
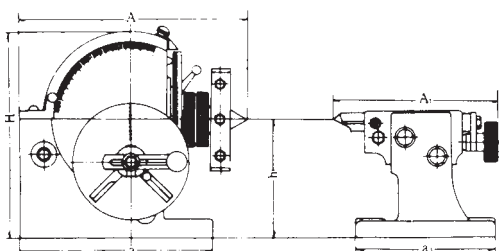
ORDER NO.	WEIGHT(kgs)	CODE NO.
BS-0	18.9	1001-050
BS-1	33.3	1001-051
BS-0-J-5	23.7	1001-053
BS-1-J-6	42	1001-054

Standard Accessories



Dividing Plate A, B, C

Plate A	15	16	17	18	19	20
Plate B	21	23	27	29	31	33
Plate C	37	39	41	43	47	49



Semi-Universal Index B & S Type No. 0 No. 1 (Head-stock):

Unit:mm/inches.

ORDER NO.	A	B	H	h	a	b	g	TAPER OF CENTER	Diameter of spindle hole
BS-0	189 7 7/16	140 5 23/64	173 6 13/16	100 3 15/16	160 6 19/64	91 3 37/64	13 33/64	MT-2	18
BS-1	293 11 17/32	156 6 9/64	220 8 21/32	128 5 3/64	207 8 9/32	114 4 31/64	16 5/8	MT-3	20

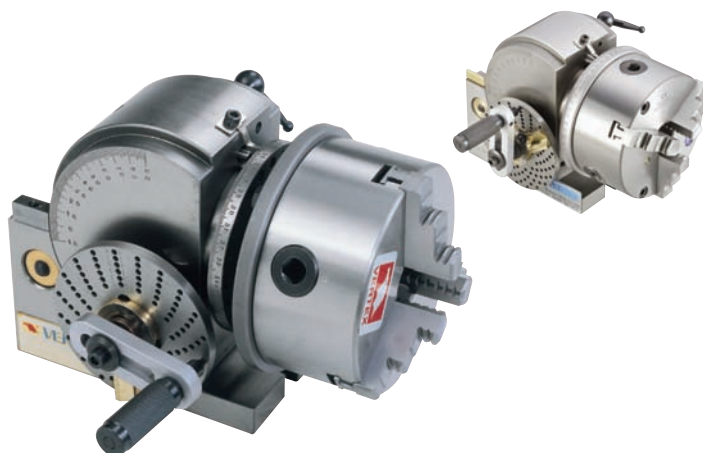
Semi-Universal Index B & S Type No. 0 No. 1 (Tail-Stock):

Unit:mm/inches.

ORDER NO.	A1	B1	H1	h	a1	b1	g1
BS-0	167 6 37/64	80 3 5/32	107.5 4 15/64	100 3 15/16	130 5 1/8	92 3 2/8	13 33/64
BS-1	191 7 33/64	88 3 15/32	137 5 25/64	128 5 3/64	150 5 29/32	108 4 1/4	16 5/8

- Dividing Head can divide in any angle by the direct, indirect, or different methods. The ratio between the worm and the worm gear is 40:1.
- Hardened and ground spindle is rigidly held in a taper roller bearing. Worm is hardened and ground also.
- The swivel head can be locked of any angle from 10° below horizontal to 90° vertical-precision fitting to base assures smooth rotation.
- All models have threaded spindle nose and 24 hole dividing plate with easy conversion to fast direct indexing on numbers 2, 3, 4, 6, 8, 12, and 24.
- Easy indexing of all numbers from 2 to 50 and many numbers from 52 of 380. Model BS-2 is also equipped for different indexing of all numbers from 2 to 380, and for spiral cutting.
- Accurate precision, little backlash, fine appearance and strong structure so can assure smooth rotation.

NEW MODEL FOR NEXT



BS-0-J is
BS-0 fitted with 5" 3-Jaw Chuck & Standard
Accessories



THREAD SPINDLE: 2 1/4" - 8TPI

NEW MODEL FOR NEXT



NEW MODEL FOR NEXT



BS-2-J IS BS-2 WITH 6" 3 JAW CHUCK & STANDARD ACCESSORIES

ORDER NO.	WEIGHT(kgs)	CODE NO.
BS-2	64.8	1001-052
BS-2-J-6	78.5	1001-055
BS-2-J-8	80	1001-056

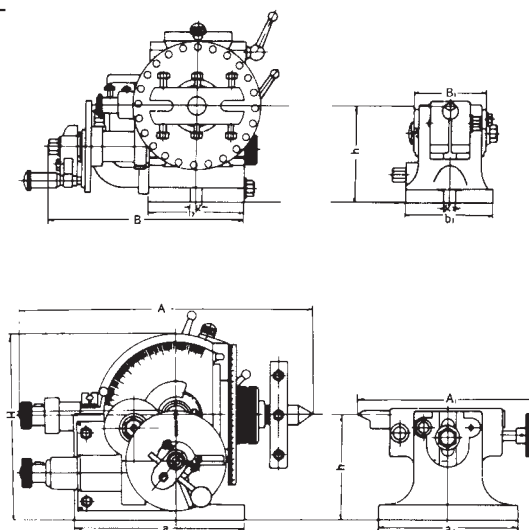
Standard Accessories



Universal Index B & S Type No.2 (Head-stock):

ORDER NO.	A	B	H	h	a	b	g	Taper of center	spindle hole
BS-2	365 14 13/32	272 10 45/64	236 9 13/64	132.7 5 15/64	213 5 25/64	134 5 9/32	16 5/8	MT-4	25.4 1

Unit:mm/inches.



BS-2 (Tail-stock)

Unit:mm/inches.

ORDER NO.	A1	B1	H1	h1	a1	b1	g1
BS-2	205~255 8 5/64~10 5/64	86 3 15/32	139 5 15/32	132.7 5 15/64	175 6 57/64	124 4 7/8	16 5/8

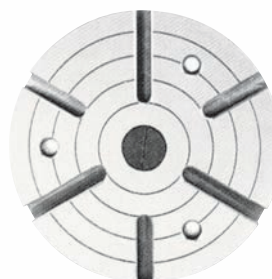
ORDER NO.	Gross Weight kg	Meas. CFT	Applicable Chuck
BS-0	(C)20	0.8	5"
BS-1	(C)33	1.3	6"
BS-2	(C)65	3.4	6" OR 8"

Test Report

ITEM NO.	TESTING OBJECTIVE	VARIATION (INCHES)(MM) MAXIMUM TESTED	
1	TRUE RUNNING OF CENTER	0.0006(0.015)	
2	TRUE RUNNING OF INSIDE TAPER OF DIVIDING SPINDLE (1) MEASURED AT SPINDLE NOSE (2) MEASURED AT ARBOR 8-IN.LONG	(1) 0.0004(0.01) (2) 0.0012(0.03)	(1) (2)
3	AXIAL MOVEMENT OF DIVIDING SPINDLE	0.0004(0.01)	
4	DIVIDING ACCURACY OF WORM DRIVE MAXIMUM CUMULATIVE SPACING ERROR	1'30"	



Standard Accessories



Special Accessories

The same as Rotay table
Please see page A2

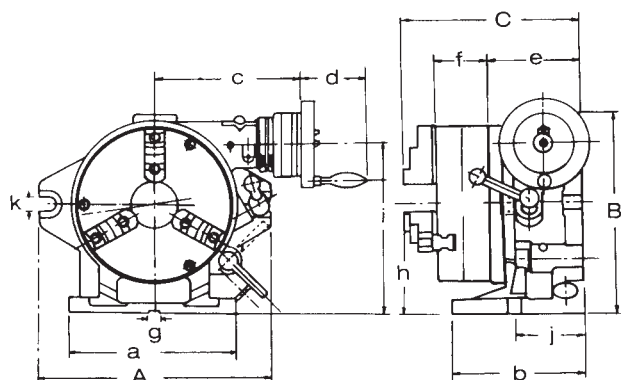


CS-8 with VSK-8 3-JAW

MASKING PLATE & FACE PLATE

This product combines the advantages of the Super Index with those of a worm-gear index. When mounted on a milling, boring or other machine tool it can carry out single-purpose indexing and indirect indexing using the worm-drive mechanism. Disengaging the worm drive the 24-notch master plate permits 2, 3, 4, 6, 8, 12 and 24 dividing in the same manner as the Simple Index. When the chuck is removed, the unit can be used as a horizontal and vertical type rotary table. The operating handle to rotary table worm gear reduction ratio is 1:90. The operating handle collar is graduated in one minute, and readings down to ten seconds can be set on the vernier.

- Super spacer index include 3 jaw chuck, 10"/250mm face plate, masking plates 2, 3, 4, 6, 8, 12.



The state of CS-8 fitted with Face Plate & Dividing Plate

Specifications

Unit:mm

ORDER NO.	Numbers of dividing	Chuck				Face plate		A	B	C	a
		Outer diameter	Inner jaw	Outer jaw	Inner dia	Outer dia	Thickness				
CS-6	2, 3, 4, 6, 8, 12, 24	167 VSK-6	4~42	10~156	44	203	50	250	235	221	220
CS-8		210 VSK-8	4~62	10~180	63	254	58	310	285	243	225

Unit:mm

ORDER NO.	b	c	d	e	f	g	h	i	j	k	Gross Weight kg	Meas. CFT	CODE NO.
CS-6	150	184	82	112	66	16	123	186	80	18	(W)44.6	1.2	1001-060
CS-8	160	201	82	125	75	16	155	232	90	18	(W)71.4	3.1	1001-061

(W)Wooden Case (C)Carton Case

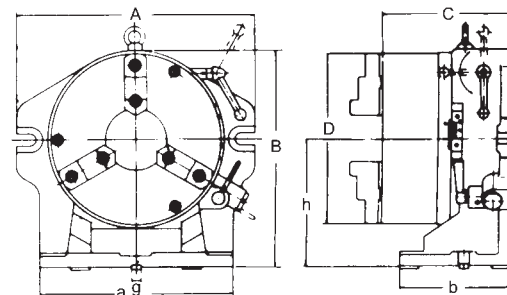


CC-12
BIG HOLE DESIGN



CC-8

- The center through hole is big to be suitable for the large and long workpiece.
- Hardened and ground 24 position master plate, can index the special angle of 15 with excellent accuracy.
- CS-Type can be used with 2 pcs type 3-Jaw Chuck. Especially, it does similar work. as rotary table when it match with face plate.
- Rapid indexing and easy operation. It's a sharp equipment for mass-production.
- Simple index include 3-jaw chuck, Masking Plates 2, 3, 4, 6, 8, 12
- Used the key guide block, the center can be corrected quickly and accurately.
- CC-6 WITH VSK-6A CHUCK
CC-8 WITH VSK-8A CHUCK
CC-12 WITH VSK-12 CHUCK



Special Accessories



STANDARDS OF ACCURACY for Simple Index for Super-Dex.

NO.	Testing Objective	Tolerances Unit: inches Permitted Max.
1	Parallelism of table surface to base per 12"	.0006
2	True running of axial movement of table surface	.0006
3	True running of center boss	.0004
4	Squareness of base to angle face per 12"	.0008
5	True runing of chuck center	.0012
6	Dividing accuracy individual spacing error	45"

Specifications

Unit:mm

ORDER NO.	Dividual number	A	B	C	D	a	b	h	Inner jaw	Guide black g	Outer jaw	Diameter of hole (turret)	Diameter of hole (chuck)	Gross weight kg	Meas. CFT	CODE NO.
CC-6	2, 3, 4, 6, 8, 12, 24	260	218	156.2	167	220	130	123	4~42	16	10~156	44	44	(C)29.4	0.9	1001-062
CC-8	2, 3, 4, 6, 8, 12, 16, 24, 48	312	257	173.3	200	258	148	155	4~62	16	10~180	63	58	(C)51.6	1.3	1001-063
CC-12	2, 3, 4, 6, 8, 12, 16, 24, 48	433.2	391	232.5	310	353.8	198.3	228	5~108	16	15~265	106	105	(W)90.7	3.6	1001-066



2 PCS HIRTH Coupling

VIT-450~1200 PICTURE

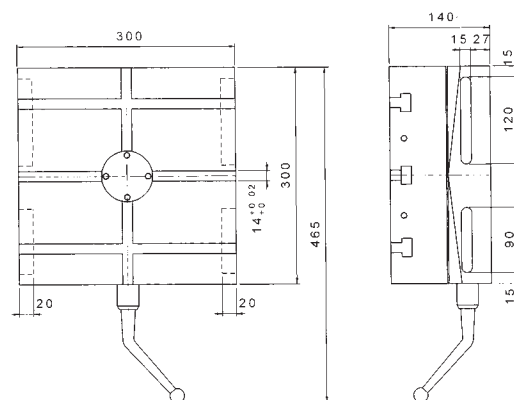
ORDER NO.	VIT-300-15	VIT-450-1	VIT-600-1	VIT-700-1			
		VIT-450-5	VIT-600-5	VIT-700-5	VIT-800-5	VIT-1000-5	VIT-1200-5
Table size LxW (mm)	300x300	450x450	600x600	700x700	800x800	1000x1000	1200x1200
Height (mm)	140	170	200	220	280	300	340
Spindle hole (mm)	-	ø30	ø40	ø40	ø60	ø60	ø80
T-slot (mm)	14	18	20	20	22	22	22
Table rotating		Clockwise and counterclockwise					
Table Lifting up & Clamp down stroke (mm)	5	5	5	5	5	8	8
Driving	Longitudinal	Manual					
	Revolving	Air Pressure 5~8kgs/cm ²					
Number of division (degree)	15°	1° or 5°					
Division (sec.) Accuracy		±3					
Max. load weight in theory (kgs)	1200	2400	3400	3400	4500	6000	7000
Allowable load weight (kgs)	500	1000	2000	2000	3000	5000	6000
Clamping capacity (kgs)	-	2200	3200	3200	5400	5400	8100
N.W. (kgs)	93.8	205	400	600	900	1200	2000
CODE NO. 1°	1001-070(15)	1001-071	1001-072	1001-073			
CODE NO. 5°		1001-081	1001-082	1001-083	1001-084	1001-085	1001-086

- The body is FC-35 cast iron, durable and will last longer without deformation.
- Clamping/Unclamping by pneumatic, easy operation.
- Powerful clamping design, allow heavy cutting and boring.

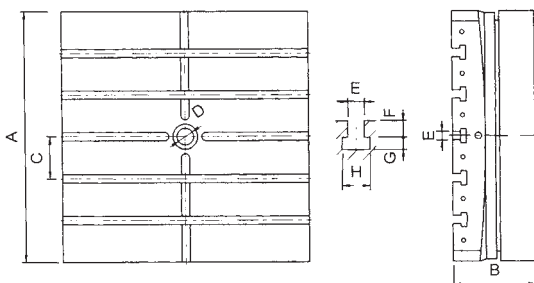
- Build-in 2 pieces hirth coupling for positioning, indexing accuracy +/-3 sec, ensure a long-term operation.
- Suitable for the high accuracy machining such as Boring-Milling, Grinding-Machine.

DIMENSION

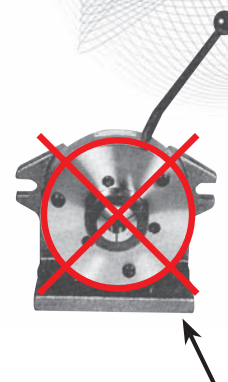
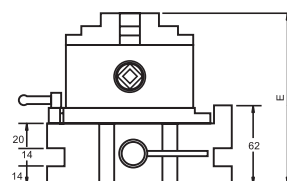
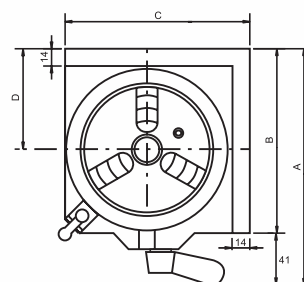
VIT-300 (PICTURE)



VIT-450~1200



	VIT-450	VIT-600	VIT-700	VIT-800	VIT-1000	VIT-1200
A	450	600	700	800	1000	1200
B	170	200	220	280	300	340
C	100	100	125	100	150	200
D	30	40	40	60	60	80
E	18	20	20	22	22	22
F	16	20	20	23	23	23
G	12	14	14	15	15	15
H	28	35	35	38	38	38



5C COLLET INDEXER
NON ECONOMICAL

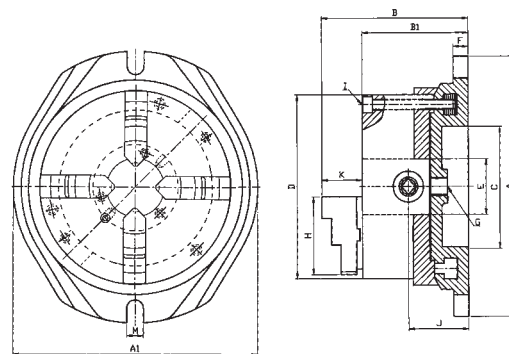
- 3 JAW CHUCK VSC-4A, for VSI-4 / VSC-5A for VSI-5, the big range clamping capacity $\varnothing 3 - \varnothing 100$, it's better than collet fixing type.
- Simple & rapid operation.
- Dividual number 24-notch (15° each)
- Table scale 1° , for angular indexing.
- Table bore 30mm.
- Horizontal / vertical & 2 direction
- Suit for milling & drilling machine using.
- Optional: tailstock TS-1, Please see page A2

ORDER NO.	A	B	C	D	E	kgs	CODE NO.
VSI-4	187	146	146	80	135	10.5	1001-064
VSI-5	202	161	161	87	142	14.5	1001-065



Simple Rotary Chuck

NEW



VSR-6 WITH VPS-6A CHUCK
VSR-8 WITH VPS-8A CHUCK

- 4-jaw chuck (include reversable and removable jaw) is designed with swivel base for multifunctional purpose.
- VERTEX simple rotary chuck can be placed and fixed on your desired position.
- 360° vernier scale: smooth swival motion and easy locking by screws.
- Both horizontal and vertical position could be used on milling and machining center.

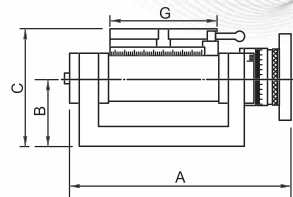
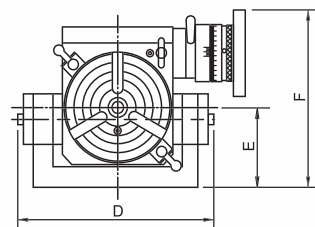
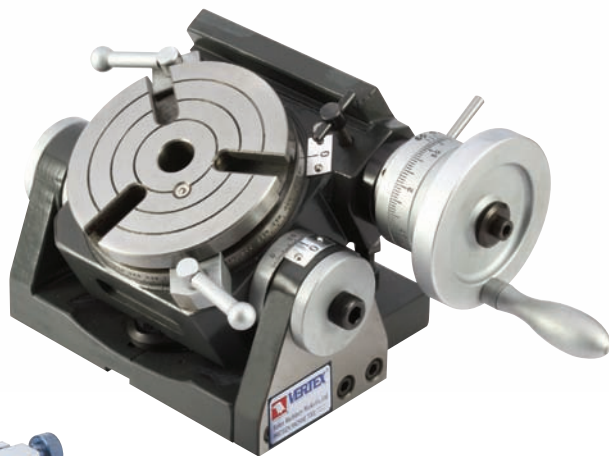
ORDER NO.	A	A1	B	B1	C	D	F	G	H	I	J	K	M	kgs	CODE NO.
VSR-6	244.6	233.2	139.3	110.4	100	160	14.9	25	70.6	3-M8	69	28.9	14	17.9	1001-066
VSR-8	340	269.4	159	124.6	115	200	18.4	25	86	3-M10	75.7	34.4	18.4	30.4	1001-067



Universal Tilting Rotary Table



VERTEX



OPTIONAL: 1. TAILSTOCK

ORDER NO.	CODE NO.
TS-1	1001-022
TS-3	1001-024

2. DIVIDING PLATE

ORDER NO.	CODE NO.
*DP-1 for VU-100, 150	1001-030
*DP-2 for VU-200	1001-031

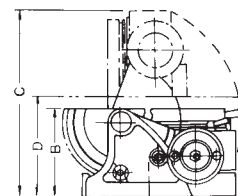
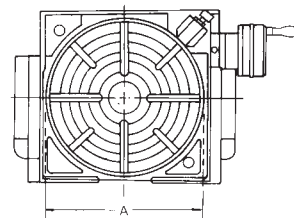
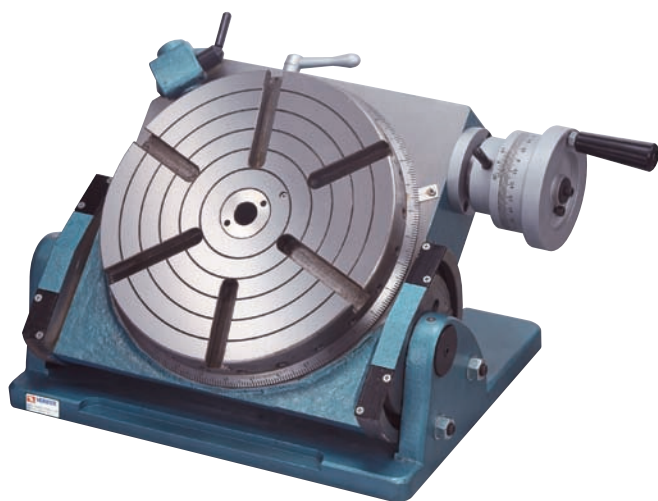
- Tilting range 0-90 degrees from horizontal to vertical position, It is high rigidity.
- Minimum Set-up time: It has two screws to lock setting. Low profile body for bigger capability.
- Worm is hardened and ground. The ratio is 90:1. The work table is graduated a full 360° so that of the handle moves the table through 4°. Micro collar is graduated in steps of 2' min.
- The tailstock & Dividing plates are optional. The sizes is same as the rotary table, please see page A2.
- For arc or index cutting at milling machine, Grinding machine or drill Machine....

ORDER NO.	A	B	C	D	E	F	G	SUITABLE TAILSTOCK	SUITABLE DIVIDING PLATE	WEIGHT kgs/cuft	CODE NO.
VU-100	228	68	117	202	80	177	100	TS-1	DP-1	13.5kgs/1.5	1001-011
VU-150	266	75	140	246	90	216	150	TS-1	DP-1	21kgs/2.0	1001-012
VU-200	429	111	177	432	141	283	205	TS-3	DP-2	50kgs/2.5	1001-013



Universal Tilting Rotary Table

ORDER NO.VU-300 CODE NO.1001-010



Order No. & Dimensions

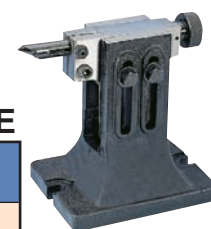
ORDER NO.	VU-300
TABLE DIAMETER A	300mm
TABLE HEIGHT (horizontal) B	185mm
TABLE O/A HEIGHT (VERTICAL) C	370mm
CENTER HOLE	MT5
CENTER HEIGHT (vertical) D	208mm
DIRECT INDEXING	24-div
GEAR RATIO	90:1
WEIGHT (G.W.)	102kgs
WEIGHT (N.W.)	99.5kgs

Special Accessories

1. DIVIDING PLATE DP-5
2. TAILSTOCK

TSU-2 ECONOMICAL TYPE

ORDER NO.	WEIGHT kgs	CODE NO.
TSU-2	12	1001-021



- This is an accurate designed table for milling, boring and other machine tools.
- This table allows indexing, facing and other work to be carried out rapidly with extreme precision.
- Tilting range 90 degrees from horizontal to vertical position, 1 rotation of handle equals 3 degrees, 5 minutes tilting reading. 10 Second Vernier Scale.
- Table Dial 1 Minute Graduations.
 - Fast Degrees: Dividing Notch Pin & 24 Holes in 15 Degree
 - Around that insures Rapid & Accurate Spacing.
 - Minimum Set-Up time.
 - Rugged Construction.